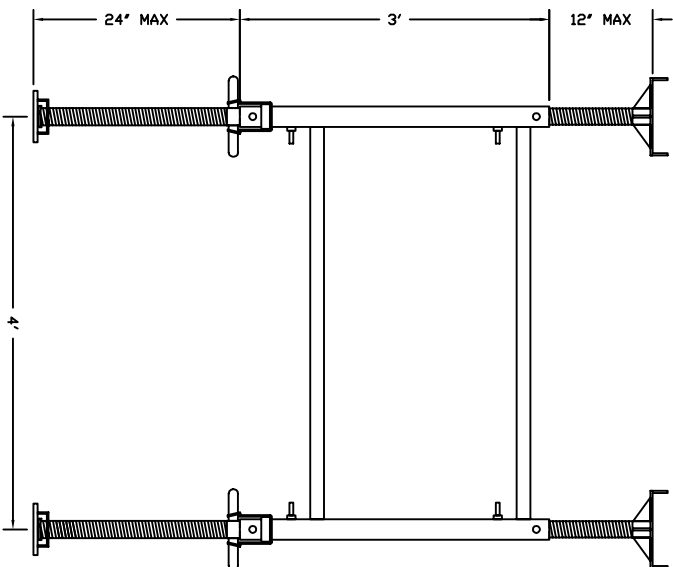


4' X 5'-3" HD SHORING FRAME WITH SSJ2-36 HD  
SCREWJACK/BASE PLATE AND USJ2-25 HD  
SCREWJACK/U-HEAD  
(CAPACITY=18K PER LEG @ 2.5:1 S.F.)

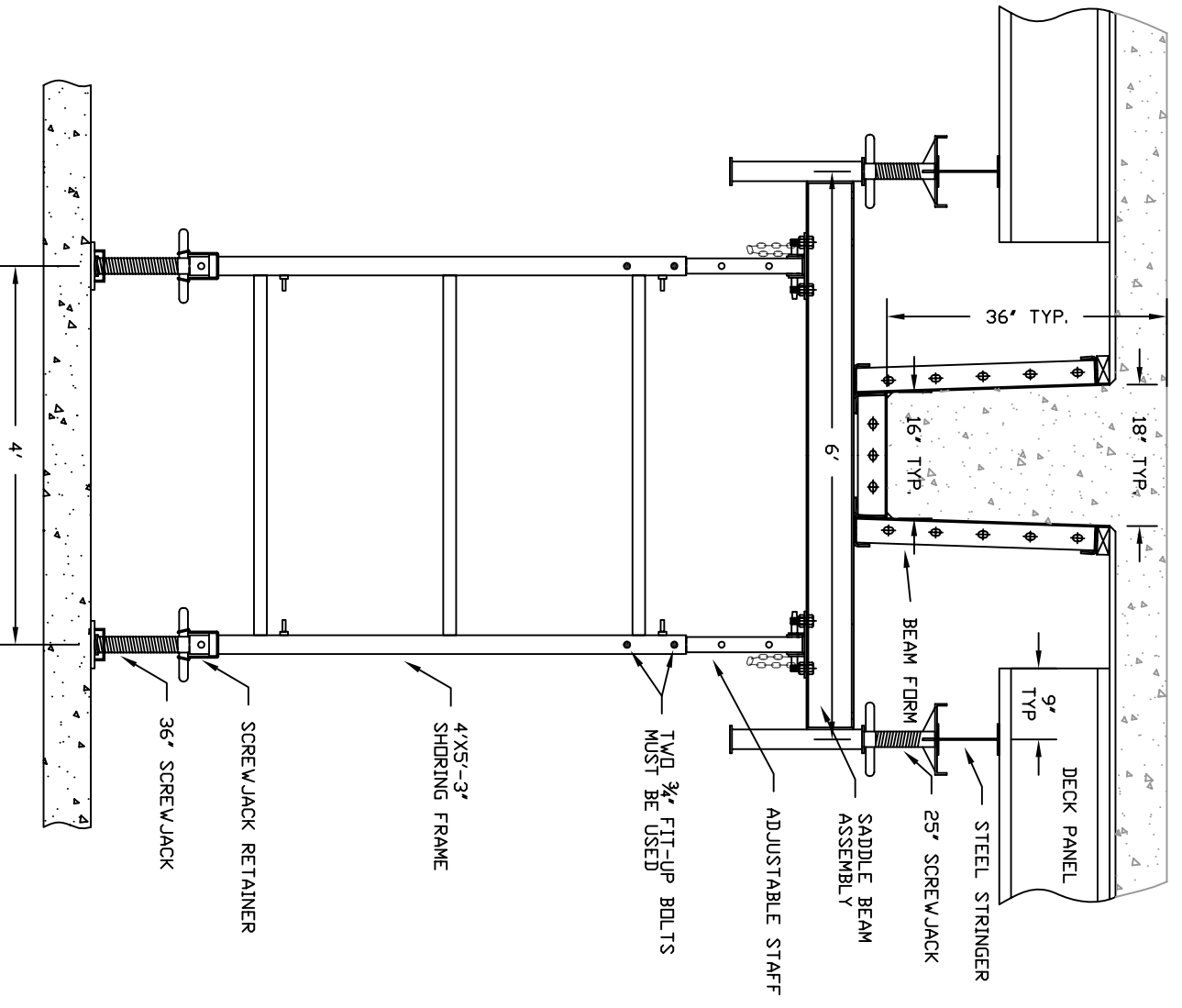


4' X 3' HD SHORING FRAME WITH SSJ2-36 HD  
SCREWJACK/BASE PLATE AND USJ2-25 HD  
SCREWJACK/U-HEAD  
(CAPACITY=18K PER LEG @ 2.5:1 S.F.)

NOTES:  
MAXIMUM SCREWJACK EXTENSION:  
24" USING SSJ2-36 (36" HD SWIVEL SCREW JACK)  
12" USING USJ2-25 (25" HD U-HEAD SCREW JACK)

**GAMCO**

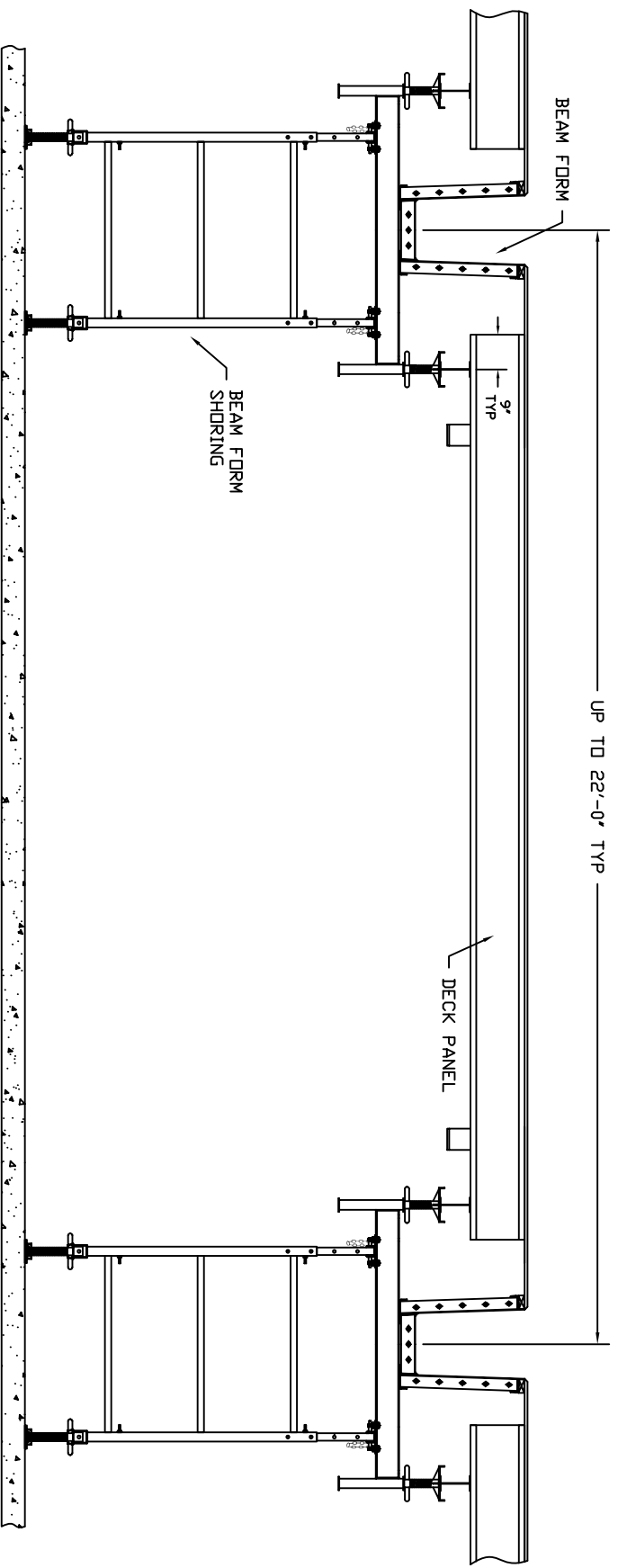
PART NAME:			
HD SHORING FRAMES			
REFERENCE:			
GAMCO GARAGE BEAM SYSTEM			
DRAWN:	DATE:	SCALE:	SHEET:
MRM	12/02	3/4	1/1



TYPICAL SHORING & BEAM FORM SECTION



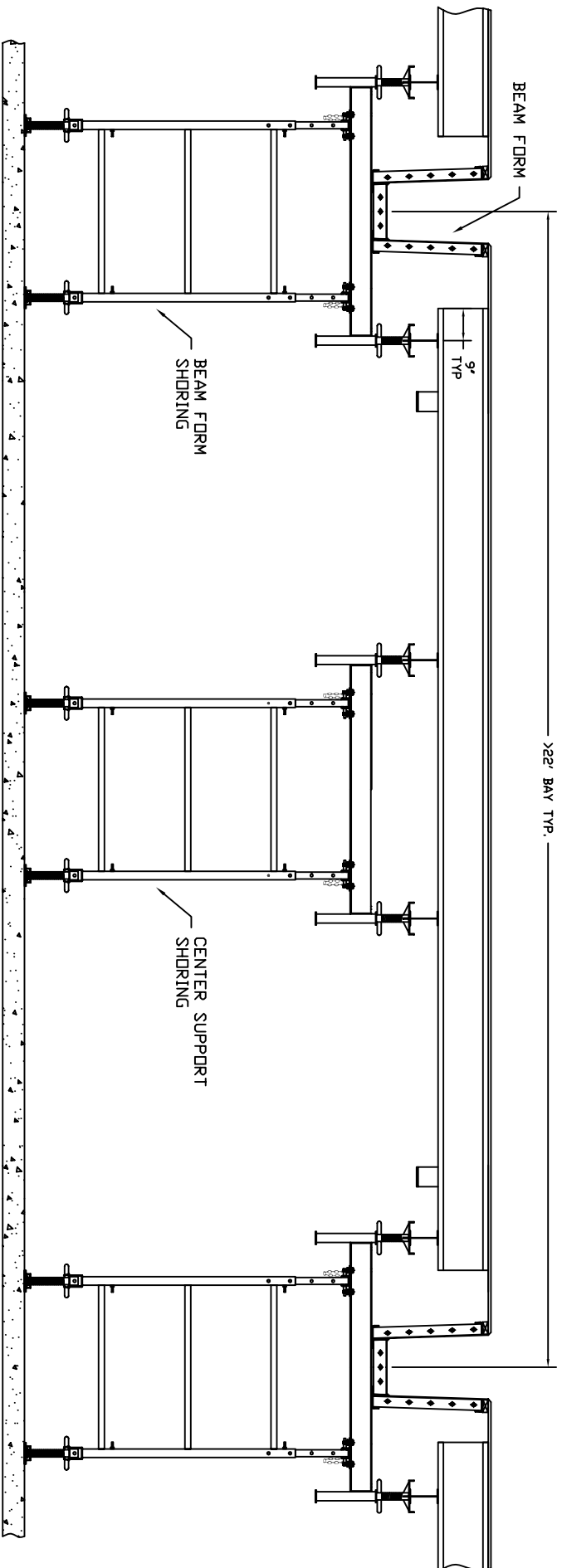
PART NAME:			
TYPICAL DRAWING			
REFERENCE:			
GAMCO GARAGE BEAM SYSTEM			
DRAWN:	DATE:	SCALE:	SHEET:
MRM	JAN 04		1/1



TYPICAL BAY SECTION

**GAMCO**

PART NAME:			
TYPICAL DRAWING			
REFERENCE:			
GAMCO GARAGE BEAM SYSTEM			
DRAWN:	DATE:	SCALE:	SHEET:
MRM	JAN 04		1/2



TYPICAL BAY SECTION W/ CENTER SUPPORT

**GAMCO**

CONTRACTOR:

DUGAN & MEYERS

JOB:

S. CAMPUS GATEWAY

DRAWN:

MRM

DATE:

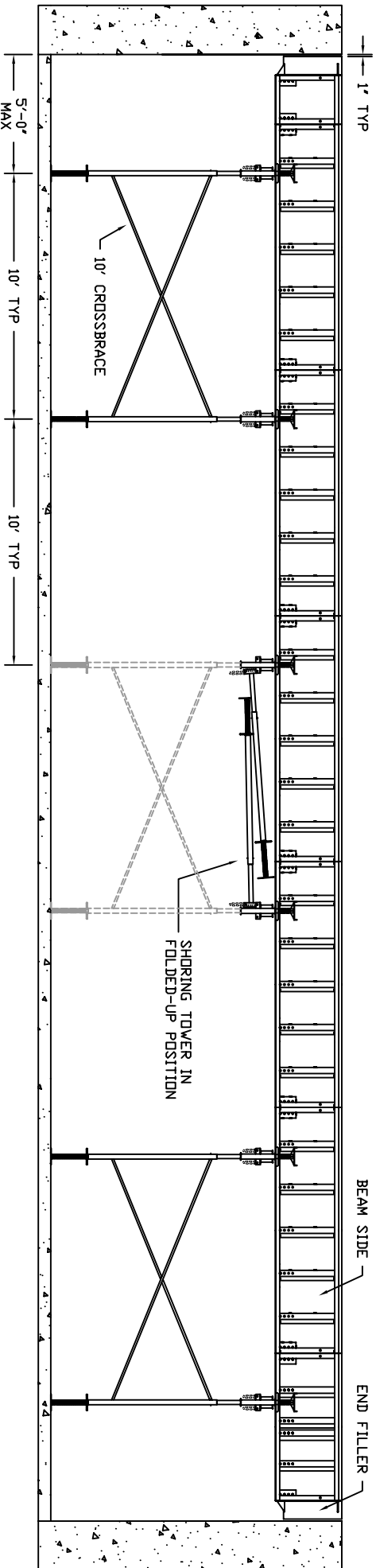
4/04

SCALE:

-

SHEET:

1/1

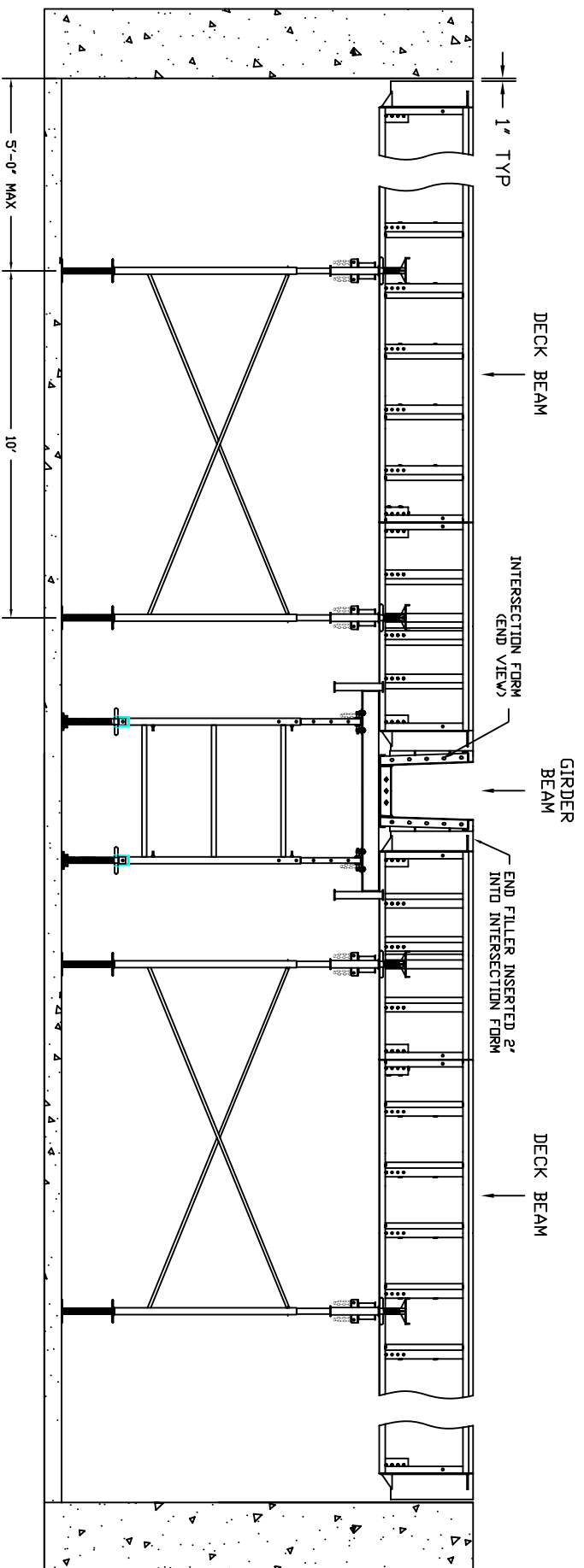


**TYPICAL SHORING/BEAM FORM ELEVATION**

NOTE:  
 STRINGER BEAM, DECK PANEL, AND COLUMN  
 CAPITAL ARE NOT SHOWN FOR CLARITY.

**GAMCO**

PART NAME:			
TYPICAL DRAWING			
REFERENCE:			
GAMCO GARAGE BEAM SYSTEM			
DRAWN:	DATE:	SCALE:	SHEET:
MRM	JAN 04		1/1



5'-0" MAX

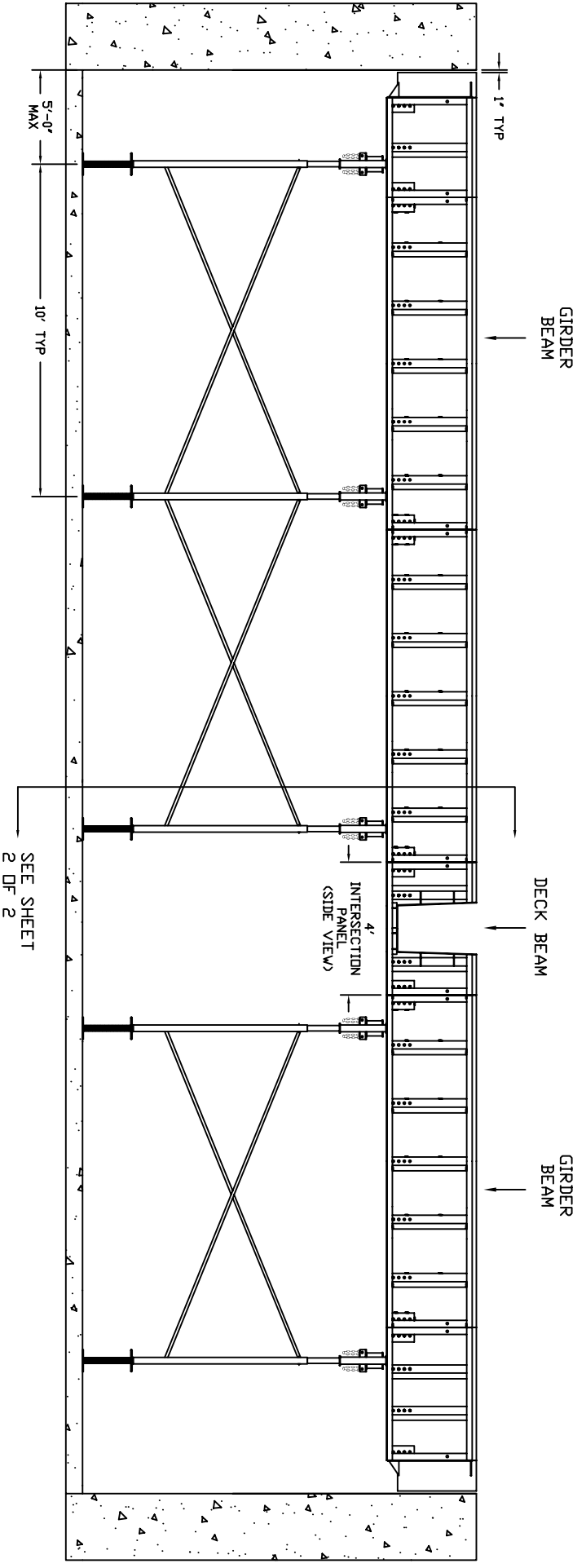
10'

**TYPICAL BEAM/GIRDER INTERSECTION**

NOTE:  
 STRINGER BEAM, DECK PANEL, AND COLUMN  
 CAPITAL ARE NOT SHOWN FOR CLARITY.

**GAMCO**

PART NAME:			
TYPICAL DRAWING			
REFERENCE:			
GAMCO GARAGE BEAM SYSTEM			
DRAWN:	DATE:	SCALE:	SHEET:
MRM	JAN 04		2/2

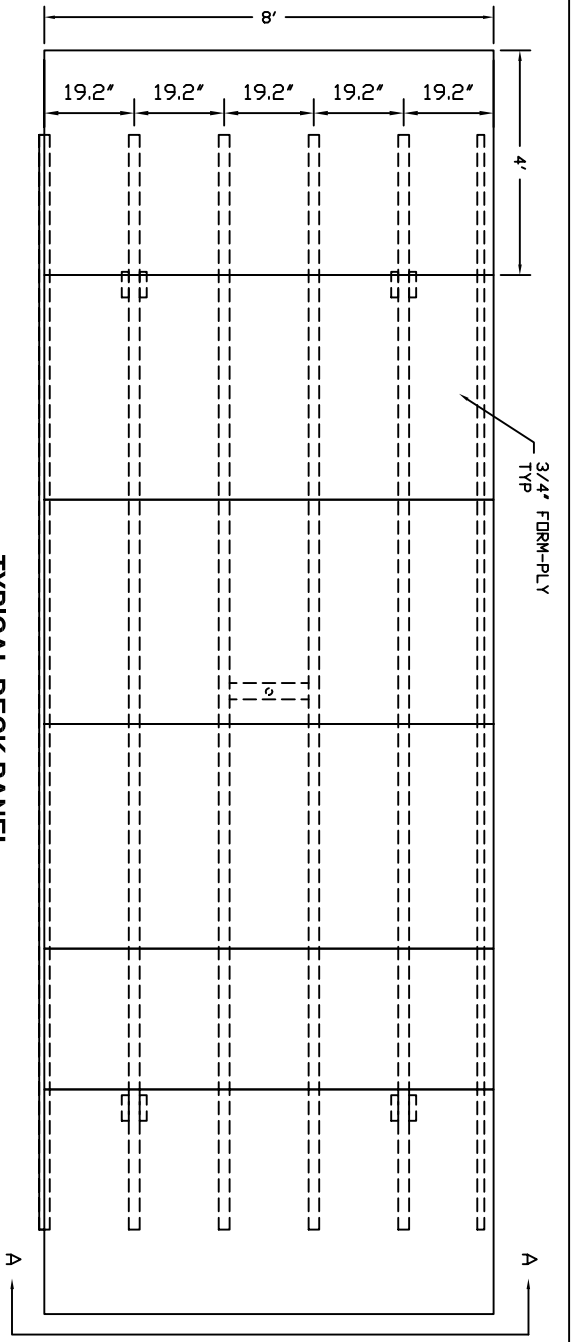


**TYPICAL BEAM/GIRDER INTERSECTION**

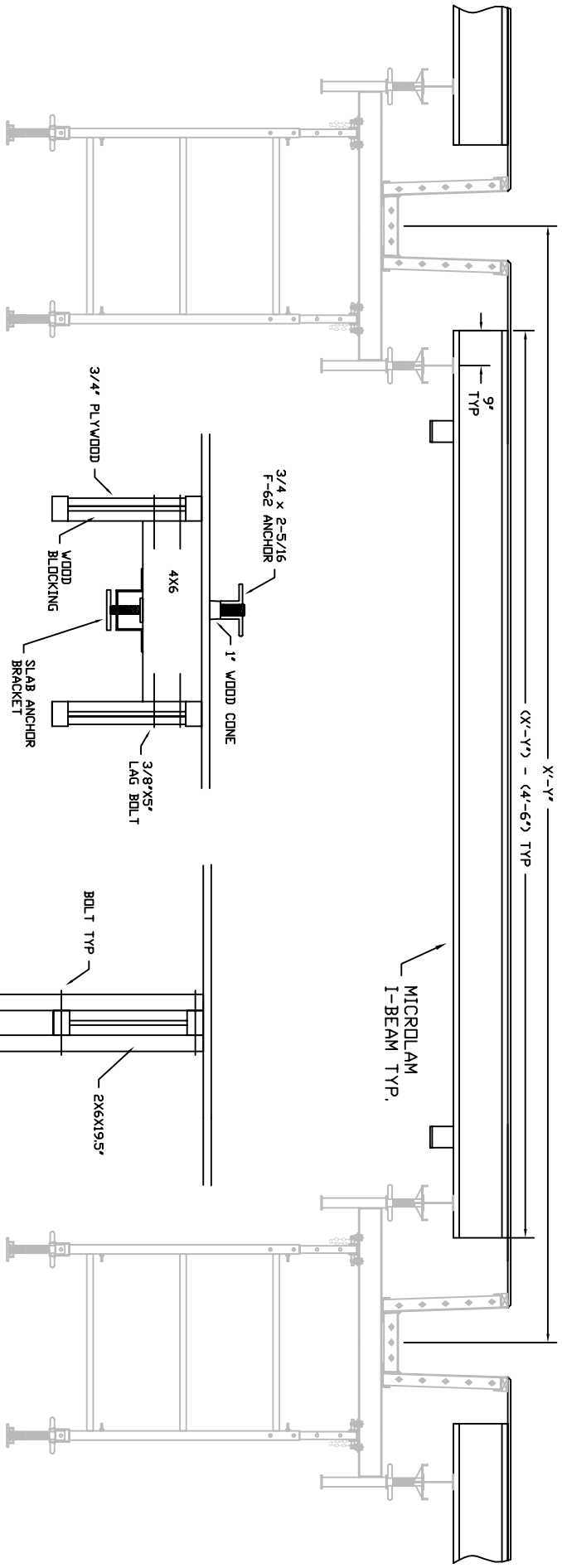
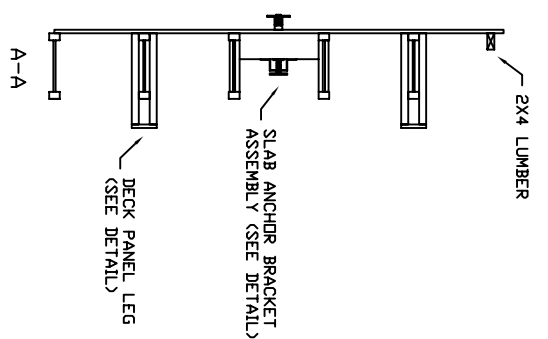
NOTE:  
 STRINGER BEAM, DECK PANEL, AND COLUMN  
 CAPITAL ARE NOT SHOWN FOR CLARITY.



PART NAME:			
TYPICAL DRAWING			
REFERENCE:			
GAMCO GARAGE BEAM SYSTEM			
DRAWN:	DATE:	SCALE:	SHEET:
MJM	JAN 04		1/2



TYPICAL DECK PANEL

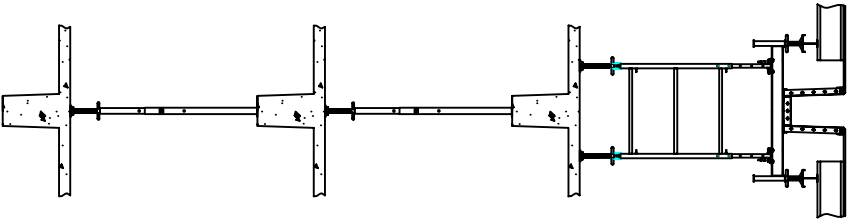


SLAB ANCHOR BRACKET DETAIL

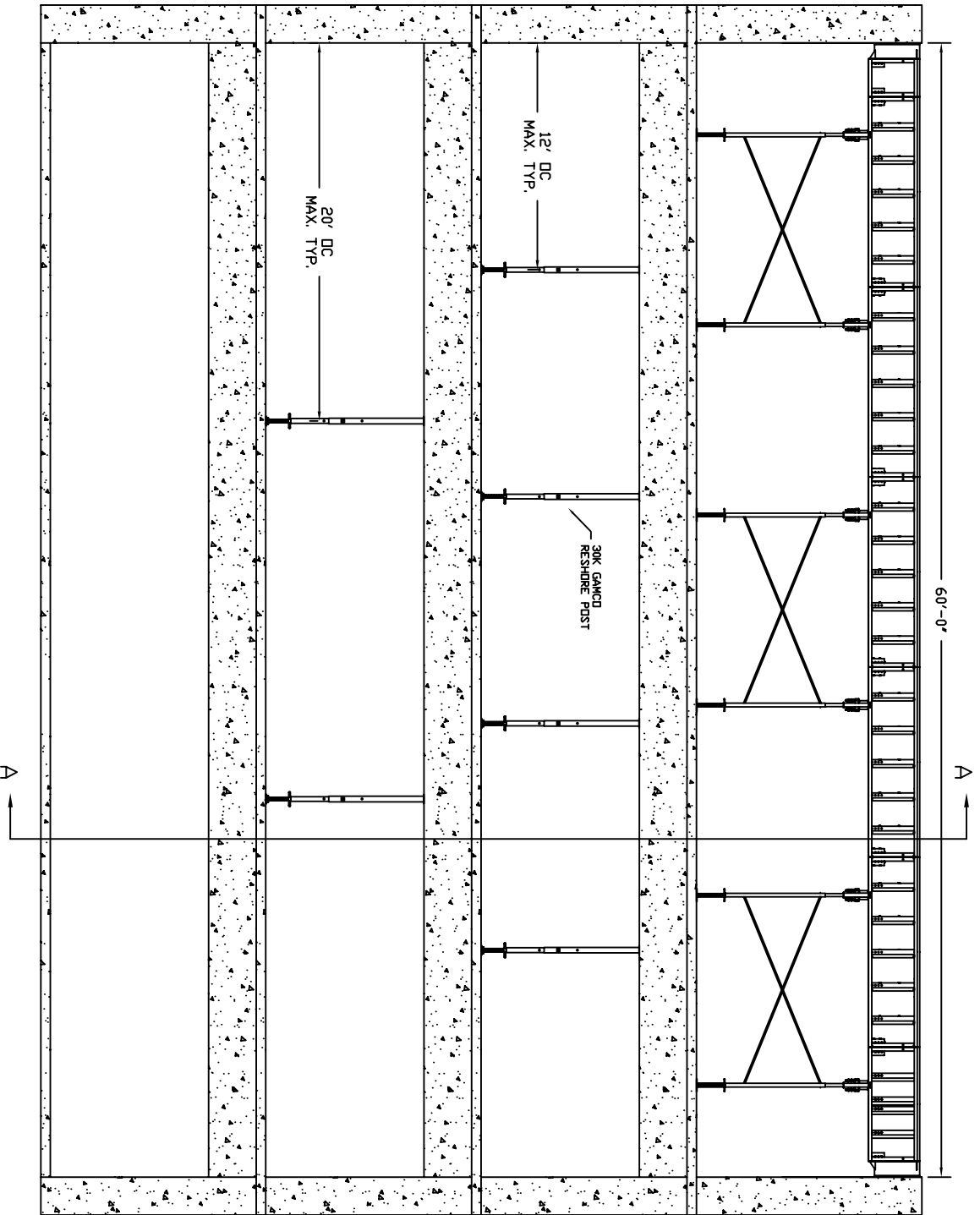
DECK PANEL LEG DETAIL

**GAMCO**

PART NAME:			
TYPICAL DRAWING			
REFERENCE:			
GAMCO GARAGE BEAM SYSTEM			
DRAWN:	DATE:	SCALE:	SHEET:
MRM	JAN 04		1/1



SECTION A-A

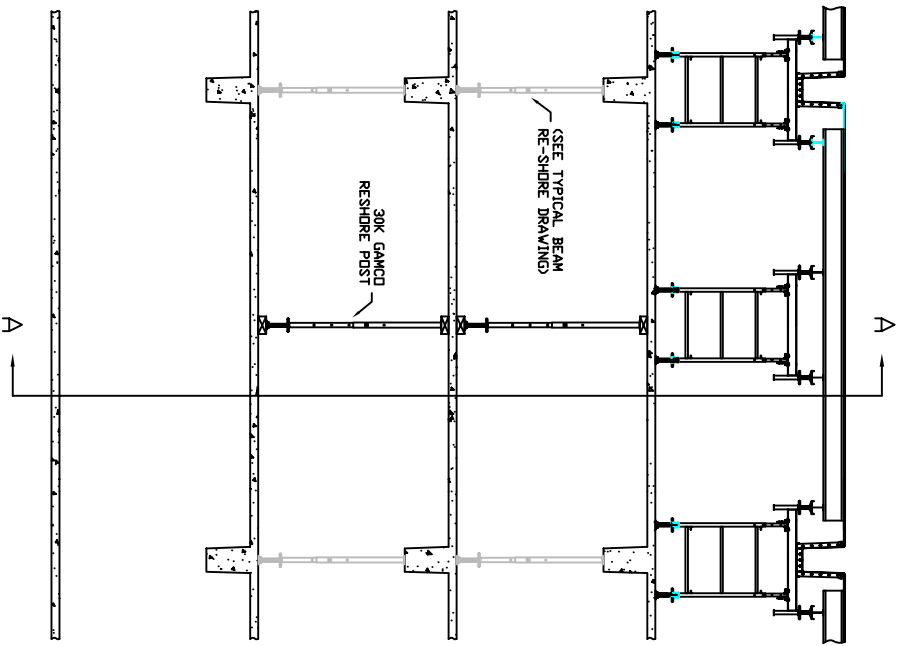


TYPICAL BEAM ELEVATION

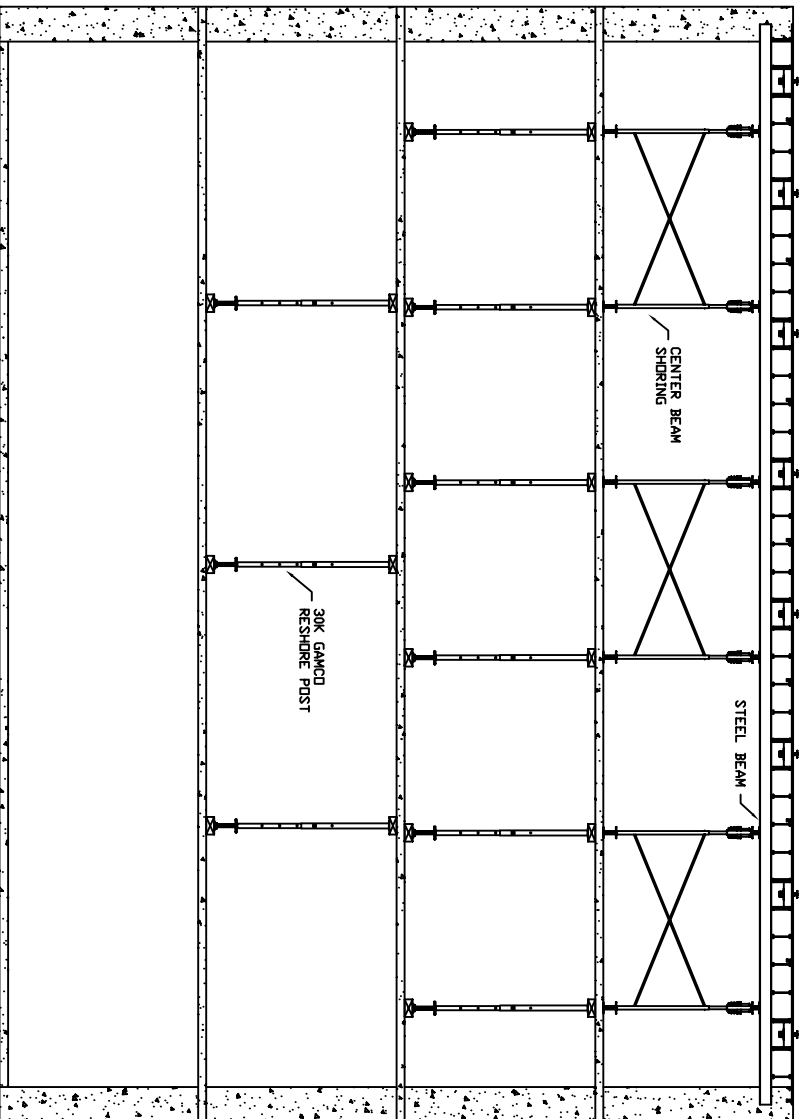
**TYPICAL BEAM  
RESHORE LAYOUT**

- NOTES:
1. RE-SHORE DESIGN BASED ON THE FOLLOWING: 50 PSF LL SLAB CAPACITY, 20' FREE-SPANNING BAY, 6.5" SLAB AND 20' X 36" BEAMS.
  2. IF PROJECT DOES NOT FALL WITHIN PARAMETERS ON THIS DRAWING, CONTACT GAMCO ENGINEERING DEPARTMENT FOR DESIGN APPROVAL.

<b>GAMCO</b>			
PART NAME: TYPICAL DRAWING			
REFERENCE: GAMCO GARAGE BEAM SYSTEM			
DRAWN: MRM	DATE: JAN 04	SCALE:	SHEET: 1/2



TYPICAL BAY WITH  
CENTER SUPPORT



SECTION A-A

TYPICAL DECK RE-SHORE (CENTER  
SUPPORT CONDITION)

NOTES:

1. IF DECK PANEL FREE-SPANS BAY, DECK RE-SHORE TYPICALLY IS NOT NECESSARY.
2. RE-SHORE DESIGN BASED ON A 50 PSF LL SLAB CAPACITY, 27' CENTER SUPPORTED BAY, 6.5" SLAB AND 20" X 36" BEAMS.
3. IF PROJECT DOES NOT FALL WITHIN PARAMETERS ON THIS DRAWING, CONTACT GAMCO ENGINEERING DEPT. FOR DESIGN APPROVAL.

**GAMCO**

PART NAME:

TYPICAL DRAWING

REFERENCE:

GAMCO GARAGE BEAM SYSTEM

DRAWN:

MRM

DATE:

JAN 04

SCALE:

SHEET:

2/2